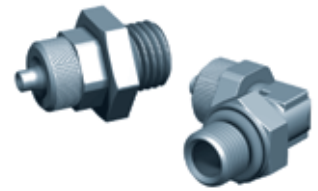


RDV, RCOV, Y

Screwed Vacuum Fittings with O-ring



Characteristics

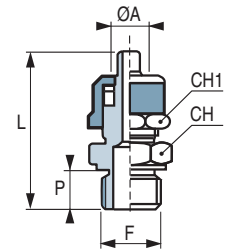
Range of special vacuum-tight fittings, fitted with O-ring (blue).

- 100% vacuum-tight and improved circuit sealing
- Can be removed and reinstalled without requiring preparation of the tubing
- Adjustable fittings for improved vacuum distribution
- Material: nickel-plated brass

RDV Series Straight Fitting

Ref.	ØA	F	CH	CH1	P	L
RDV1868	6/8*	G1/8"-M	14	14	6	26
RDV1468	6/8*	G1/4"-M	17	14	8	29
RDV14810	8/10	G1/4"-M	17	16	9	30.5
RDV3868	6/8*	G3/8"-M	19	14	9	30.5
RDV38810	8/10	G3/8"-M	19	16	9	32
RDV38812	8/12	G3/8"-M	19	19	9	32.3
RDV12810	8/10	G1/2"-M	24	16	10	33.5
RDV381012	10/12	G3/8"-M	19	19	9	32.3
RDV12812	8/12	G1/2"-M	24	19	10	34.5
RDV121012	10/12	G1/2"-M	24	19	10	34

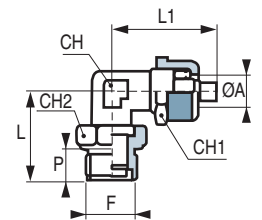
* 6/8 fittings are 5.5/8 compatible.



RCOV Series Elbow Fitting

Ref.	ØA	F	CH	CH1	CH2	P	L	L1
RCOV1868	6/8*	G1/8"-M	10	14	14	7	24	22
RCOV1468	6/8*	G1/4"-M	13	14	17	9	28.5	27.5
RCOV14810	8/10	G1/4"-M	13	16	17	9	28.5	28
RCOV3868	6/8	G3/8"-M	13	14	22	9	29	27.5
RCOV38810	8/10	G3/8"-M	13	16	22	9	29	28
RCOV12810	8/10	G1/2"-M	17	16	26	10	35	34
RCOV121012	10/12	G1/2"-M	17	19	26	10	35	34

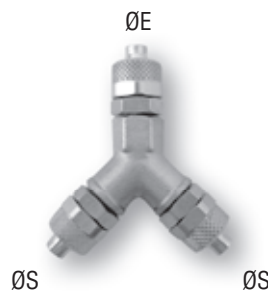
* 6/8 fittings are 5.5/8 compatible.



Y Fitting, Y Series

Ref.	ØE	ØS
Y68	6/8*	6/8*
Y810	8/10	8/10
Y81068	8/10	6/8
Y812	8/12	8/12
Y81268	8/12	6/8
Y1012	10/12	10/12
Y1012810	10/12	8/10

* 6/8 fittings are 5.5/8 compatible.



RDV, RCOV, Y